



QUICK REFERENCE GUIDE



USES BAYER'S CONTOUR[®]
BLOOD GLUCOSE TEST STRIPS



CONTOUR[®]
Test Strip



CONTOUR[®] USB
Meter



MICROLET[®]
Lancet



MICROLET[®] 2
Lancing Device

CAUTION: The lancing device is intended
for use by a single patient.

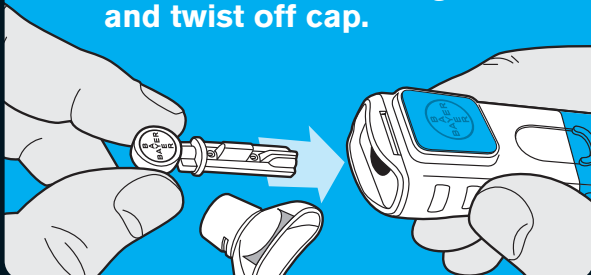
**Before first use, charge meter with
the wall charger or plug meter into
computer to charge
and set up. Computer
must be on. Once
charged, remove meter
to test.**



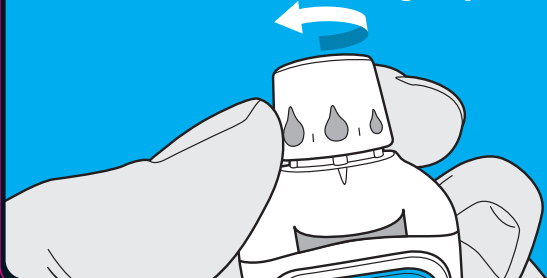
1 Wash hands
and dry
thoroughly.



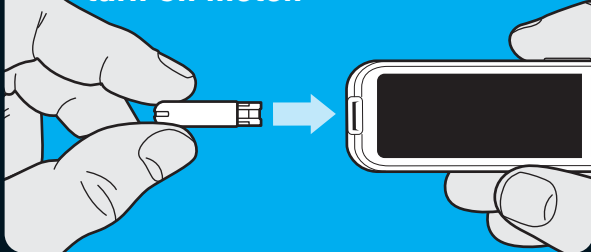
2 Insert lancet into lancing device
and twist off cap.



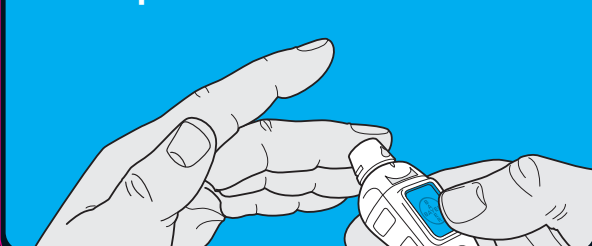
3 Dial to desired lancing depth.



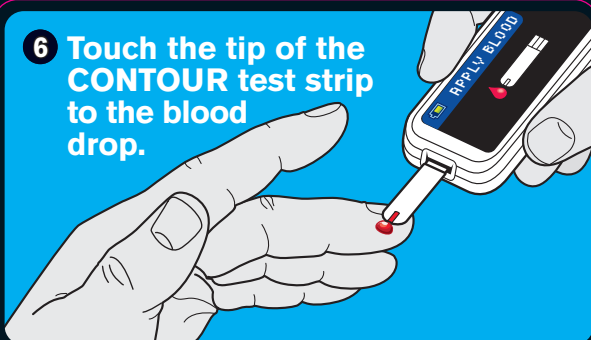
4 Insert CONTOUR[®] test strip to
turn on meter.



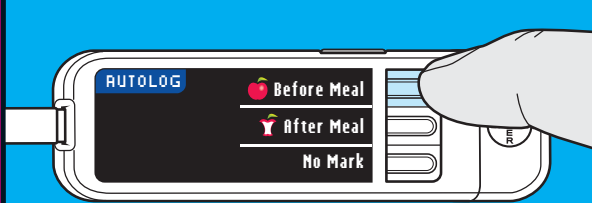
5 Hold lancing device against site
and press button.



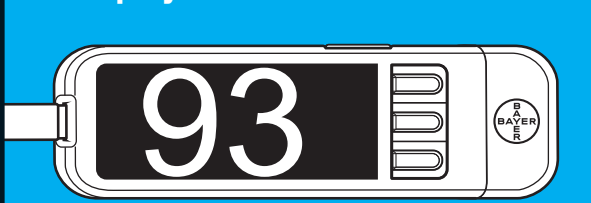
6 Touch the tip of the
CONTOUR test strip
to the blood
drop.



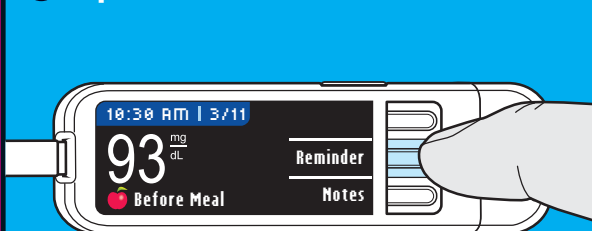
7 Select Before Meal or
 After Meal.



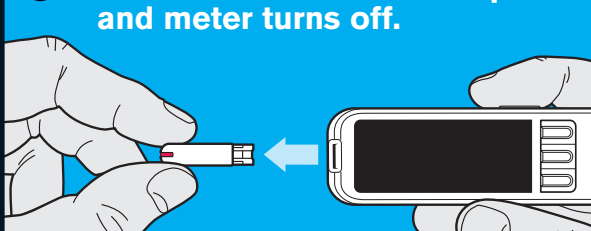
8 After selection, your test result is
displayed.



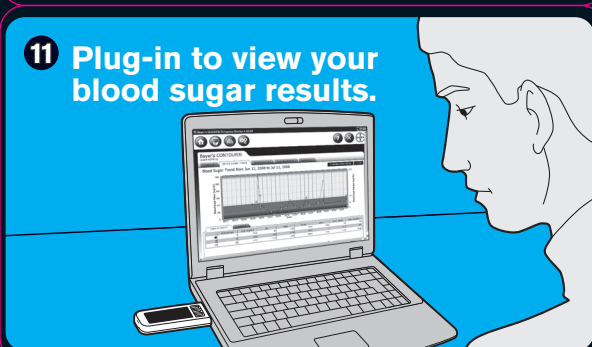
9 Optional: Set Reminder or Notes.



10 Remove CONTOUR test strip
and meter turns off.



11 Plug-in to view your
blood sugar results.



12 Take action!

